

Table of Contents

Event analysis IV	2
History	5

Event analysis IV

Multiple events

All types of events can be used in multiple events analysis: manual, ambient and/or behavioral (see tutorials 14, 15 and 16).

To create a multi event chart, click the **Create Multi Event Chart** button



A window listing the events appears:

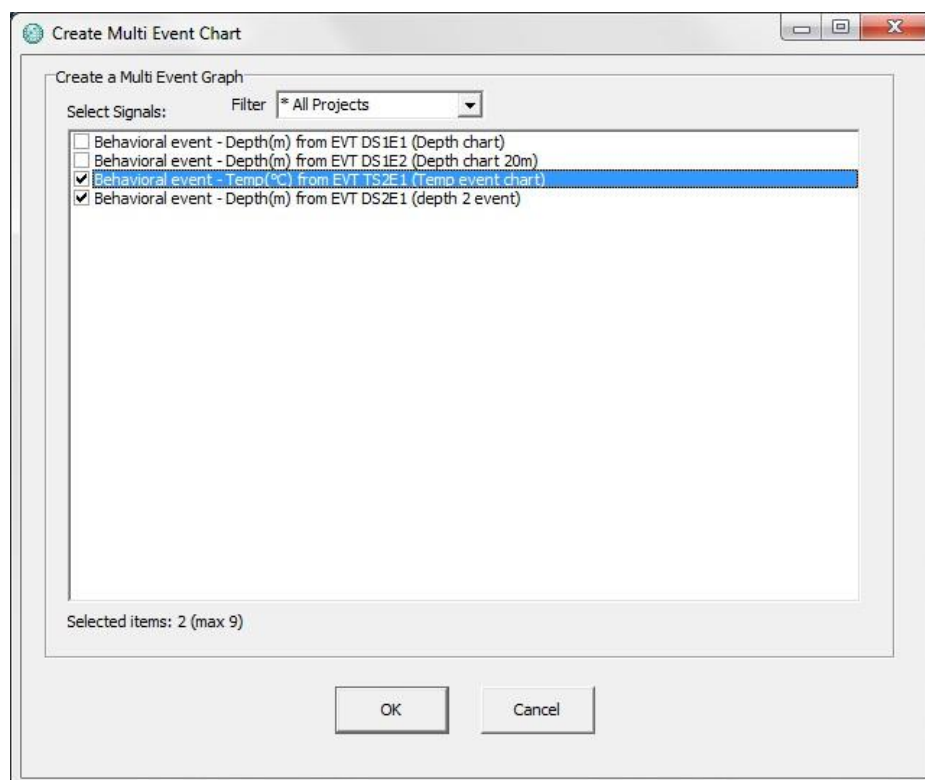


Figure 1 Create multi event chart

You can filter the signals by selecting one of the options in the drop-down list (see figure 2).

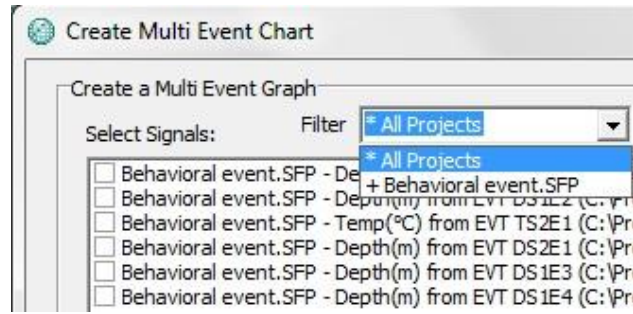


Figure 2 Filter

Select the events you want to include in the chart and click OK. The following window appears:

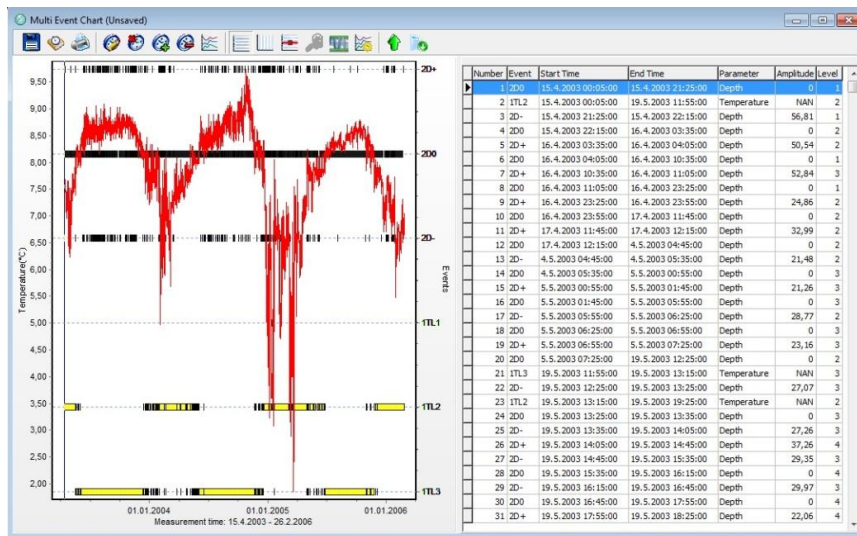



Figure 3 Multi event chart

You can only view one signal at a time. To switch between signals click the **Select active series** button  on the chart bar.

The following window appears:

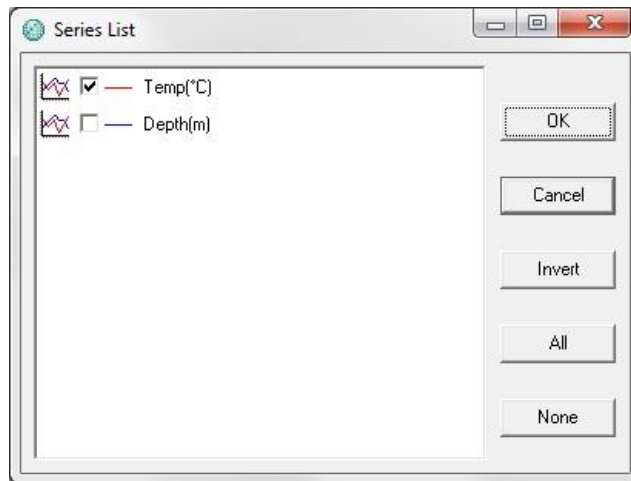


Figure 4 Series list

Select the signal you want to view on the chart and click **OK**.

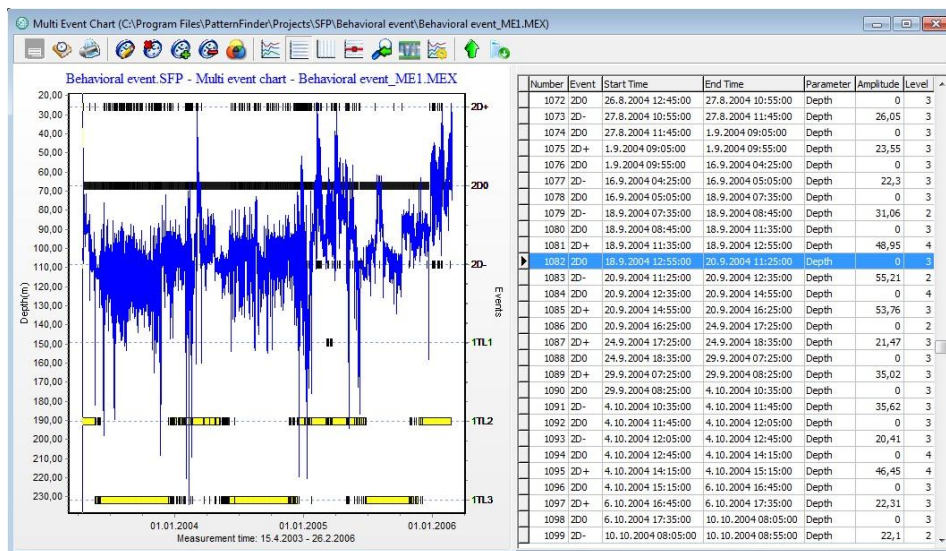



Figure 5 Multi event chart

History

Click the **History** button  on the chart bar to add comments and view information on the origin of the signal and the progress of the project (see figure 6). Click **Print** to print out the information (see figure 7).

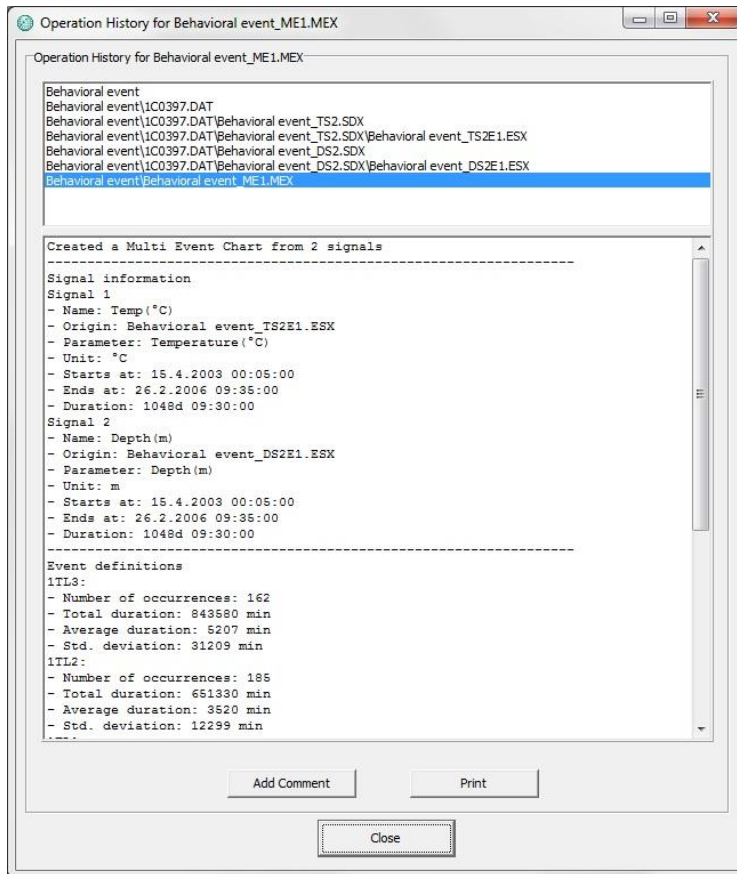


Figure 6 History

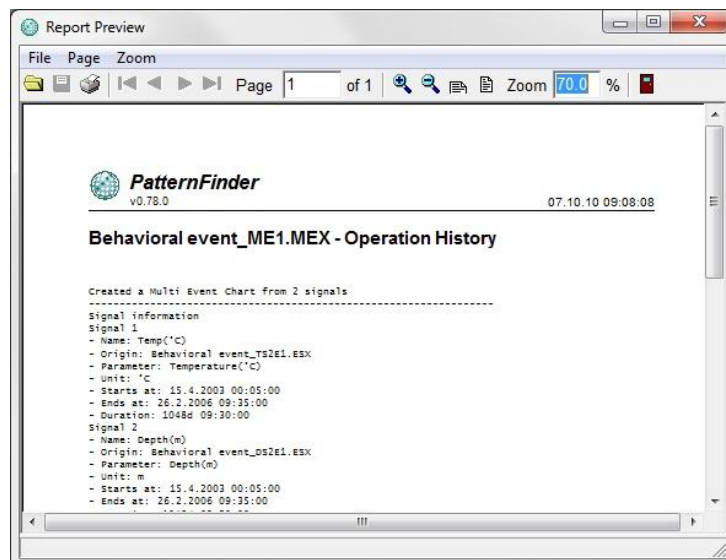


Figure 7 Print Preview